



## Forged brass mining gauge



### Application:

- For mining equipment and plants (hydraulic roadway support)

### Features:

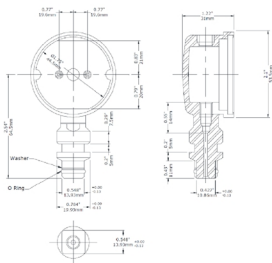
- Rugged, 2" (50mm) forged brass case and connection
- Forged brass case and socket
- Glycerin filled
- 3 coloured zone dial for easier pressure reading
- 0-9,000 psi/bar

### Specifications:

Dial size:	2"
Accuracy class:	2.5%
Case:	One piece forged brass
Wetted parts:	Brass
Liquid fill:	Glycerin standard
Lens:	Polycarbonate
Pointer:	Aluminum, anodized black

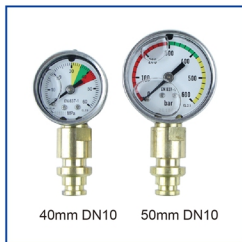
Connection:	3/8" steck-o connection, quick connect with sealing o-ring and PTFE wahser (bottom connection)
Over pressure limit:	25% of full scale value
Working Pressure:	Maximum 70% of full scale value
Ambient/Process:	-4°F to 150°F (-20°C to 65°C) glycerin-filled
Temperature:	-40°F to 150°F (-40°C to 65°C) dry
Enclosure Rating:	IP65

### Dimensions:





## Stainless steel case brass socket mining gauge



### Application:

- For mining equipment and plants (hydraulic roadway support)

### Features:

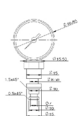
- 1.5", 2" stainless steel case brass socket
- Glycerin filled
- 3 coloured zone dial for easier pressure reading
- 0 - 600bar

### Specifications:

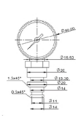
Dial size:	1.5", 2"
Accuracy class:	2.5%
Case:	Stainless steel
Wetted parts:	Brass DN6 or DN10
Liquid fill:	Glycerin standard
Lens:	Polycarbonate
Pointer:	Aluminum, anodized black

Connection:	3/8" steck-o connection, quick connect with sealing o-ring and PTFE wahser (bottom connection)
Over pressure limit:	25% of full scale value
Working Pressure:	Maximum 70% of full scale value
Ambient/Process:	-4°F to 150°F (-20°C to 65°C) glycerin-filled
Temperature:	-40°F to 150°F (-40°C to 65°C) dry
Enclosure Rating:	IP65

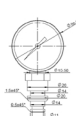
### Dimensions:



40mm DN6



40mm DN10



50mm DN10

