



Electric contact pressure gauge



Application:

- Control and regulation of industrial processes
- Monitoring of plants and switching of electric circuits

Features:

- High reliability and long service life
- Up to 4 switch contacts per instrument
- Also available with liquid-filled case for high dynamic pressure loads or vibrations
- Contact gauges comply with DIN 16085

Specifications:

Dial size: 2.5", 4", 6",

Accuracy class: 2.5%(2.5");
1.6% (4", 6")

Scale ranges: -1... 0 to 0 ... 1600 bar

Case: Black steel or SS304

Connection: Brass or SS316L

Movement: Brass or stainless steel

Pressure element: Brass or SS316L

Maximum working voltage: AC380V or DC220V

Set Pointer: Red

Window: Laminated safety glass
tempered glass or PC

Dial: Aluminum, white

Pointer: Aluminum, black

Maximum Current: 1A

Quantity of Contacts: 1 or 2, (4" & 6", 3 or 4 contacts available)

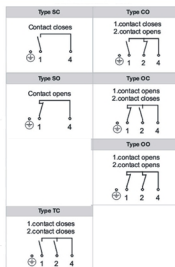
Options:

Oil filling (Special liquid filled)

Polished stainless steel

Diaphragm electric contact gauge
explosion-proof type

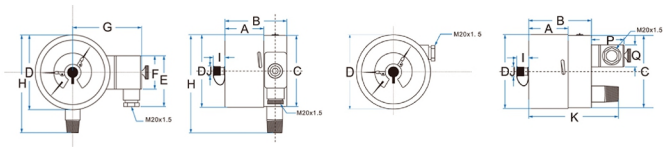
Control function - code:





Electric contact pressure gauge

Dimensions:



Type	Dial Size (inch)	Connection	A (mm)	B (mm)	C (mm)	D (mm)	E (mm)	F (mm)	G (mm)	H (mm)	I (mm)	J (mm)	K (mm)	P (mm)	Q (mm)
ECPG-4-BTM	4	Bottom	54	86	99	101	72	50	92	140±5	21	14	1	1	1
ECPG-4-LBM	4	Low Back	54	86	99	101	1	1	1	1	21	14	130±5	44	31
ECPG-6-BTM	6	Bottom	54	90	146	150	72	50	118	190±5	21	14	1	1	1

Models:



Black steel case
electric contact
pressure gauge



Semi-steel
electric contact
pressure gauge



All stainless steel
electric contact
pressure gauge



Back connection
electric contact
pressure gauge



Explosion-proof
inductive
electric contact
pressure gauge



Diaphragm type
electric contact
pressure gauge



Back connection with flange
electric contact
pressure gauge



Diaphragm low
pressure electric
contact pressure gauge

How to order Electric contact pressure gauge:

	CODE	CHARACTERISTICS							
Basic type	ESS	Stainless steel case							
	EBS	Black steel case							
Diameter	25	2 1/2"							
	4	4"							
	6	6"							
Connection	B	Brass							
	316L	SS316L							
Mounting	BM	Bottom mounting							
	CBM	Center back mounting							
	LBM	Lower back mounting							
Mounting options	FF	Front flange							
	BF	Back flange							
	UC	U-clamp							
Control function code:	SC	Contact closes							
	SO	Contact opens							
	TC	Contact closes, contact closes							
	CO	Contact closes, contact opens							
	OC	Contact opens, contact closes							
	OO	Contact opens, contact opens							
Process Connection	G14	G 1/4							
	G38	G 3/8							
	G12	G 1/2							
	Z14	1/4NPT							
	Z38	3/8NPT							
	Z12	1/2NPT							
	M14	M14x1.5							
	M20	M20x1.5							
Windows	SG	Laminated safety glass (only for bayonet ring)							
	TG	Temperated glass (only for bayonet ring)							
	PC	PC							

Special Requirements additional Information:
1. range:

Order example:

	ESS	4	316L	LBM	FF	SO	Z1/2	SG
Stainless steel case pressure gauge	←							
Diameter size 4inch	←							
Connection SS316L	←							
Lower back mounting	←							
Front flange	←							
Contact opens	←							
Process Connection 1/2NPT	←							
Windows safety glass	←							
Special requirement: 0-60 bar oil filling								



Explosion-proof inductive electric contact pressure gauge



Application:

- It is not only applicable to certain dangerous places, but also suitable for frequent turn to the liquid medium
- This system is applied to 1 area and 2 area with explosive gas

Features:

- Explosion-proof inductive pressure gauge
- Without electric spark, long using life, little impact on the measurement accuracy
- It has the testing function, automatic control, and automatic warning to the liquid medium

Specifications:

Types: Bourdon tube and diaphragm type

Dial size: 4", 6",

Accuracy class: 1.6%

Scale ranges: -1 ~0,0~ 600bar for bourdon tube type
40mbar to 1bar for diaphragm type

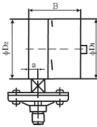
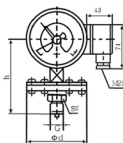
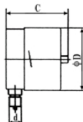
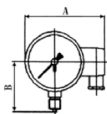
Ambient temperature: 20 °C ~ 60 °C

Pressure gauge fixed: 8VDC, safe voltage < 16VDC

Working current: opening $\geq 3\text{Ma}$, closed $\leq 1\text{Ma}$, safe current < 52mA

On/off frequency < 5000Hz

Dimension:



Dimensions (mm)	A (mm)	B (mm)	C (mm)	D (mm)	A (mm)
160	204	125	101	161	M20 X 1.5 or other specification
100	136	90	99	101	

Dimensions (mm)	Range (KPa)	d (mm)	a (mm)	B (mm)	D1 (mm)	D2 (mm)	G	h (mm)	SW (mm)
100	≤ 25	100	16	88	101	99	M20 X 1.5 or other specification	135	27
160				90	161	159		165	
100				88	101	99		135	
160	≥ 40	160		90	161	159		165	



Diaphragm low pressure electric contact pressure gauge



Application:

- Measure the micropressure of gas, liquid in industry process especially for medium of corrosion and viscosity

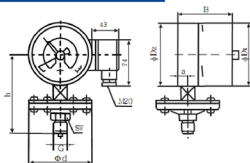
Features:

- Minimum pressure is down to 40mbar
- According to different corrosion-proof requests, many types can be selected
- Liquid filling model can be supplied, applied in the vibration environment

Specifications:

Dial size:	4", 6",	Window:	Laminated safety glass
Accuracy class:	1.6% (4", 6")		tempered glass
Scale ranges:	0 ... 40mbar to 0 ... 1000mbar	Dial:	Aluminum, white
Case:	SS304	Pointer:	Aluminum, black
Connection:	SS304 or SS316L	Contact power:	30VA
Maximum Current:	1A	Quantity of Contacts:	1 or 2
Maximum working voltage:	AC380V or DC220V		
Diaphragm material:	3J1, SS304, SS316, SS316L, PTFE coated		

Dimension:



Dimensions (mm)	Range (KPa)	d (mm)	B (mm)	D1 (mm)	D2 (mm)	G	h (mm)	SW (mm)
100	≤25	100	88	101	99	M20 X 1.5 or other specification	135	27
160			90	161	159		165	
100	≥40	160	88	101	99		135	
160			90	161	159		165	